

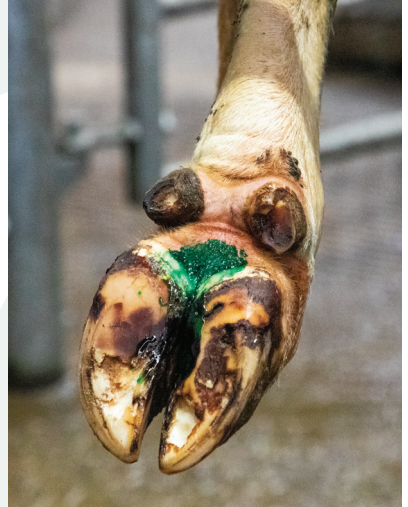
HOOF APPLICATION GUIDE

Instructions

1. Clean and dry the affected area.
2. If pre-applying compatible treatment underneath, allow to dry before application of NoBACZ Bovine.
3. Using a gloved hand, apply the product to create a thin, even layer up to 2mm depth. Allow to air dry ~1 minute.
4. Re-apply after 48-96 hours if necessary.

For hoof applications – if the foot goes straight into slurry, don't worry*: the barrier is waterproof and the surface will set on contact with water and slurry.

Additional conventional bandages are generally not required or recommended.



Additional Information

It is advisable to first test a small patch of skin in case of hypersensitivity.

Top Tips

Setting can be accelerated by frosting the site. To do this apply a spray or mist of water to the product after application.

For sand bedding – to prevent removal of product before cure, it is advised to observe a longer set time before contact with the bedding. For best results, prevent contact with sand for 1 hour after application.

*Allow up to 1 minute to dry if treated site is in direct contact with the ground before hoof release e.g. soles of claw.



QR code to
application video

